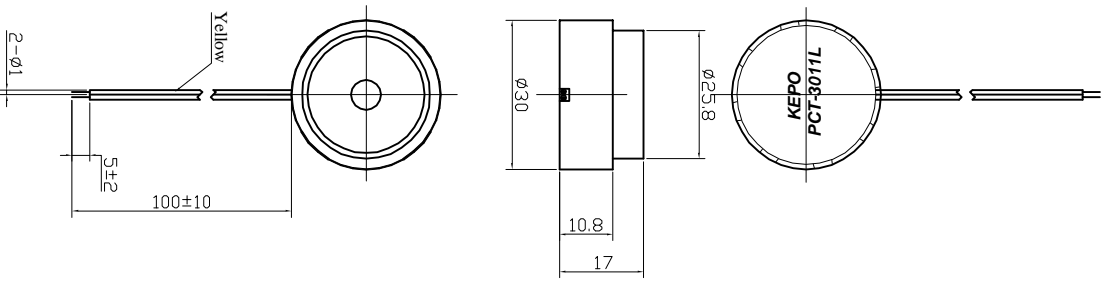


SPECIFICATION

- 1. Max. Rated Input Voltage200Vp-p Sine Wave
- 2. Min. Sound Pressure Level105±5dB at 30Vp-p Square Wave /3.3KHz/30cm
- 3. Rated Frequency Range3.3±0.5KHz
- 4. Max. Capacitance at 100Hz20000±30%μF
- 5. Shell Material/ColorABS/Ivory
- 6. Operating Temperature-20~+60℃
- 7. Store Temperature-30~+70℃
- 8. Weight6.5g



No.	DESCRIPTION	APPROVED	DATE	KEPO NINGBO KEPO ELECTRONIC CO.,LTD http://www.chinaacoustic.com Tweeter PCT-3011L1 UNIT: mm DRAWING: KP3.840.536.02 SCALE: NOT TO SCALE SHEET: 1.3			
APPROVALS		DATE					
DRAWN		CHECKED	APPROVED				
90° FORNIE 2.5° 30° FORNIE 2.5° 15° FORNIE 2.5° 10° FORNIE 2.5° 5° FORNIE 2.5° 10° FORNIE 2.5° 15° FORNIE 2.5° 30° FORNIE 2.5° 90° FORNIE 2.5°		06.10.26					